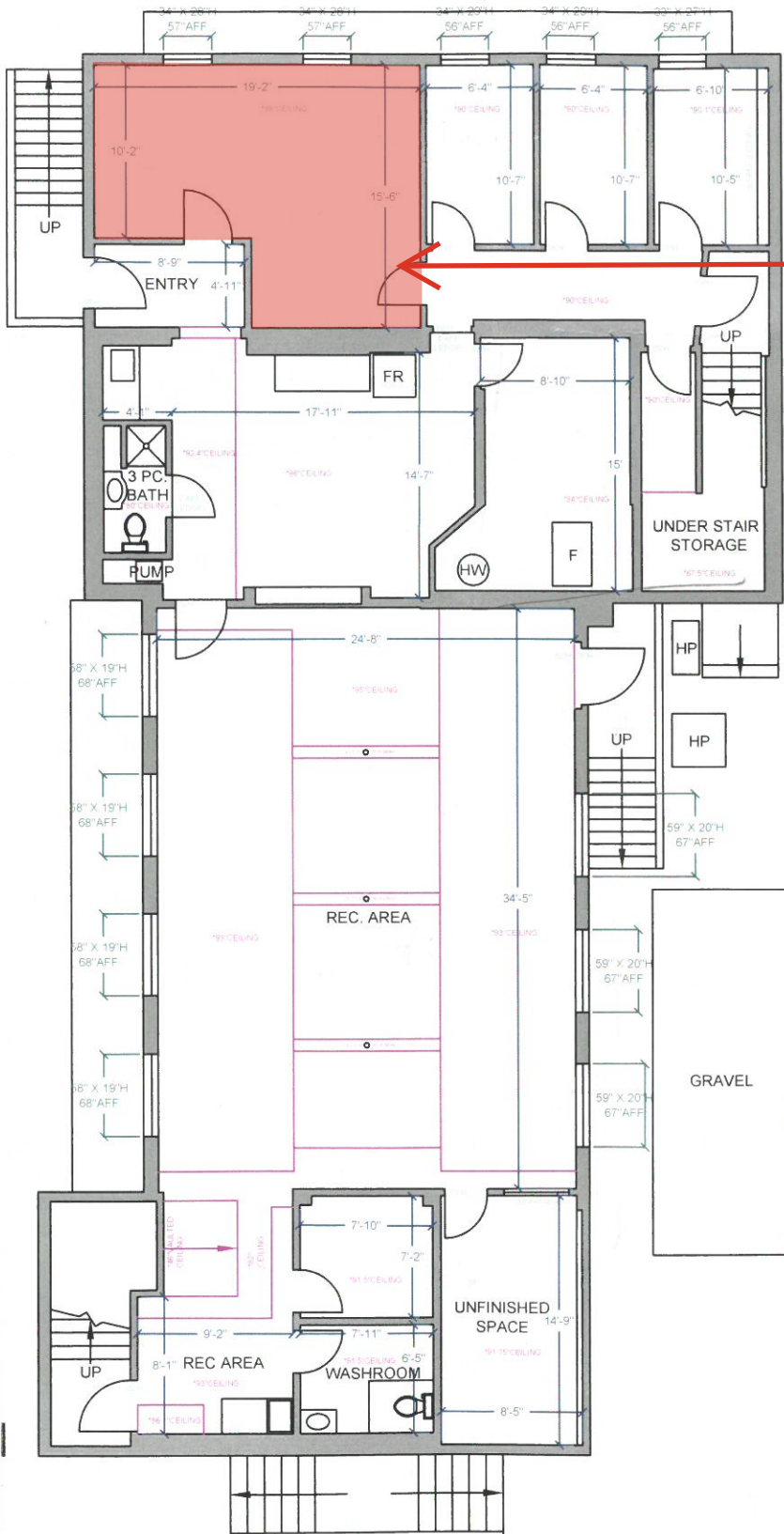
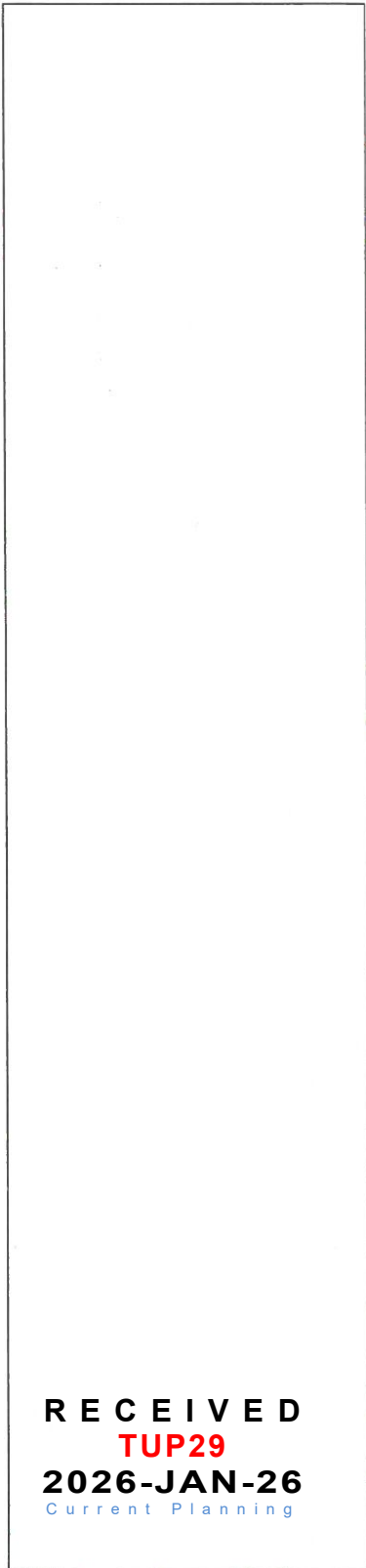


Bottom FLOOR 2766 SQ. FT.



**Proposed Personal
Service Use Area**



RECEIVED
TUP29
2026-JAN-26
Current Planning

AREA (SQ. FT.)	
MAIN FLOOR	2753
MEZZANINE	238
LOWER FLOOR	2766
TOTAL	5757
DECK	-
CARPORT	-
MEASURED BY:	J.P
FLOOR PLAN	

$\frac{3}{32}'' = 1' \text{ SCALE}$

